



SERVICE INSTRUCTIONS

1-800-KEATING • keatingofchicago.com



THERMOSTAT CALIBRATION MIRACLEAN® 2000 GAS GRIDDLE

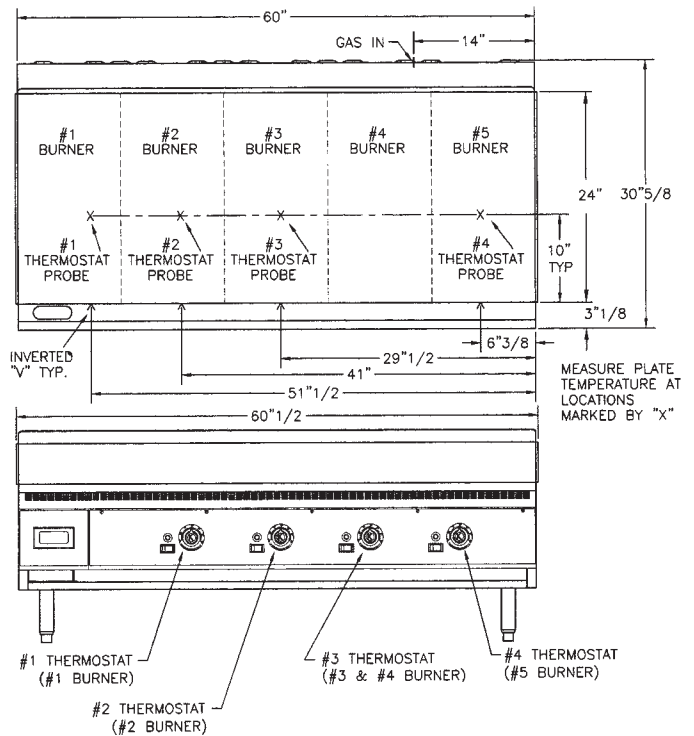
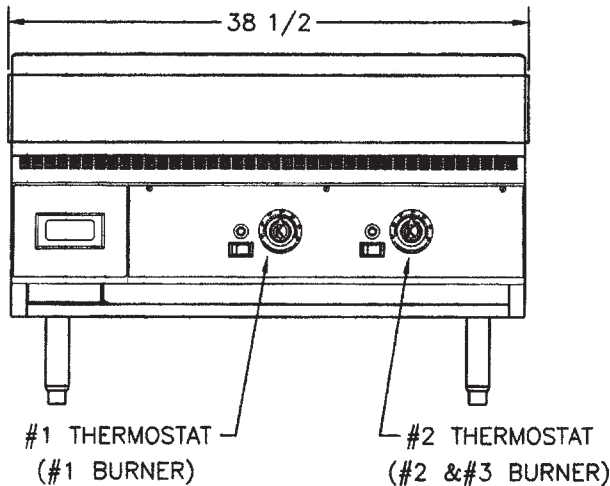
Calibration is not covered under warranty.

Tools Needed:

- Accurate surface thermometer
- Standard screwdriver

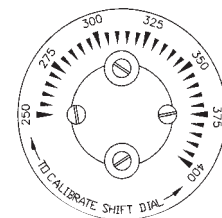
INSTRUCTIONS:

1. Turn the exhaust system ON.
2. Turn on the griddle with thermostat set at 300°F. Allow burners to cycle on and off three times. (Approximately 60 minutes.)
3. Place accurate thermometer on surface over thermostat bulb. Use the inverted "V" on the front of the griddle plate to locate thermostat bulb. Place the surface thermometer about half way toward the back of the plate.



NOTE: ALL DIMENSIONS ARE $\pm 1/8"$ UNLESS OTHERWISE SPECIFIED.

4. When burners cycle off, the griddle is up to temperature. If the temperature is $\pm 5^\circ\text{F}$, do not adjust. If temperature is within 25°F of thermostat setting, remove knob. Loosen four screws in the thermostat dial plate. Replace knob. Reset the dial plate to match the thermometer reading.
5. Remove the knob to tighten screws on dial plate and replace the knob.



Thermostat knob removed to reveal calibration screws.

For calibration over 25°F difference, contact a qualified service company.