

SERVICE INSTRUCTIONS

Part #029805

www.keatingofchicago.com

KEATING
OF CHICAGO, INC.®

1-800-KEATING

INSTRUCTIONS FOR REPLACEMENT OF A THERMOSTAT ON THE KEATING MIRACLEAN® GAS GRIDDLE

A Keating Gas Griddle Thermostat will provide consistent griddle temperatures when the thermostat bulb is installed properly under the griddle plate. Following the instructions below will ensure that the thermostat bulb will be installed properly.

1. Make sure that the thermostat capillary and bulb are completely protected by the shield, except for 1" (not including the swedge) at the end of the thermostat bulb. (See Note 1).
2. Make sure that the thermostat shield extends to the front edge of the plate, and that the capillary goes through the formed end of the shield. (See Note 2).
3. Make sure that the bolts which hold the thermostat bulb and shield in place do not touch the thermostat bulb. (See Note 3).

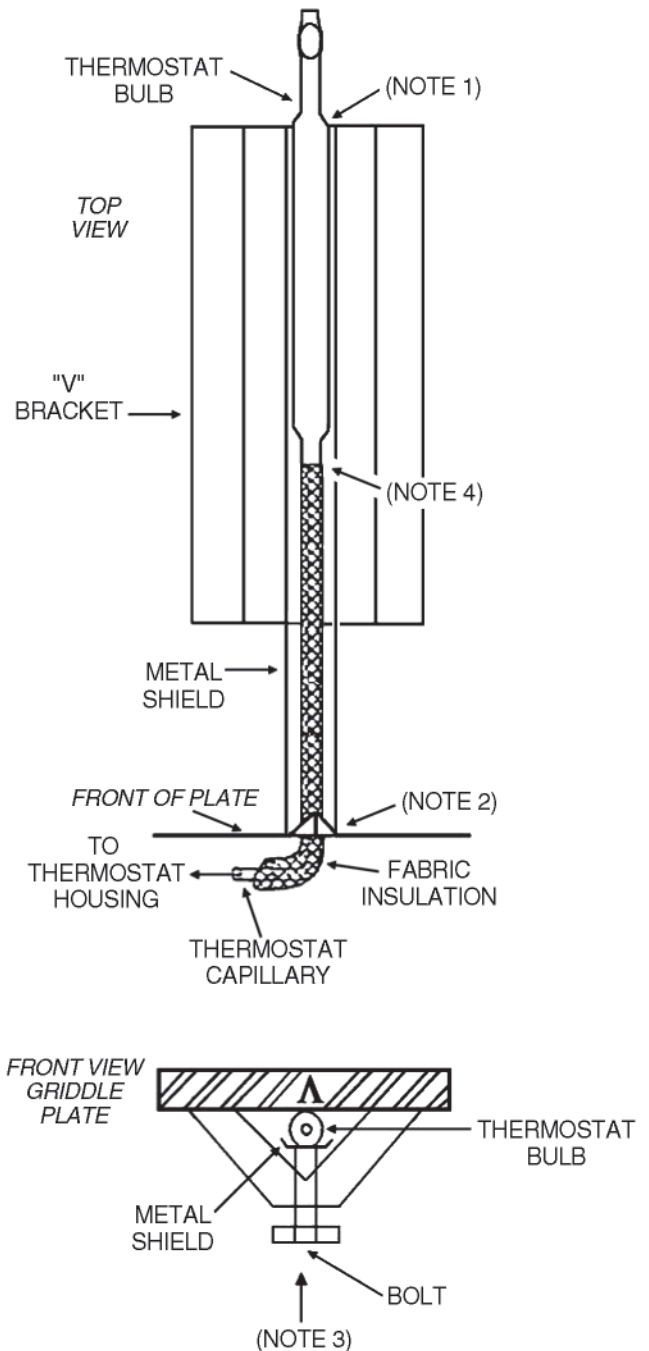
Tighten bolts about 1/4 turn past finger tight. Bulb to be snug against the bottom of the plate.

DO NOT OVERTIGHTEN THE BOLTS ON THE THERMOSTAT SHIELD OR THEY WILL CRUSH THE THERMOSTAT BULB.

4. Make sure that on the part #037088 & #023897 thermostat the insulation has been moved up the capillary and starts at the beginning of the thermostat bulb. (See Note 4).

NOTE: IF REPLACING PUSH-ON TERMINAL STYLE. Before installing thermostat into control panel, you must unscrew the two brass terminal screws and install the new ring terminal wire connectors. Prior to connecting these wires, the existing push-on terminal must be cut off and ring terminals installed on them. Make sure that the terminals are secured down.

5. Calibrate the thermostat using an accurate griddle thermometer. Locate the thermometer over the thermostat bulb (shown by the "L" on the front of the griddle plate) about half way toward the back of the plate. Calibrate to the cooking temperature you will be setting on the thermostat.



SERVICE INSTRUCTIONS

Part #029805

www.keatingofchicago.com

KEATING
OF CHICAGO, INC.®

1-800-KEATING

THERMOSTAT GAS GRIDDLE BULB REPLACEMENT

(CONTINUED)

