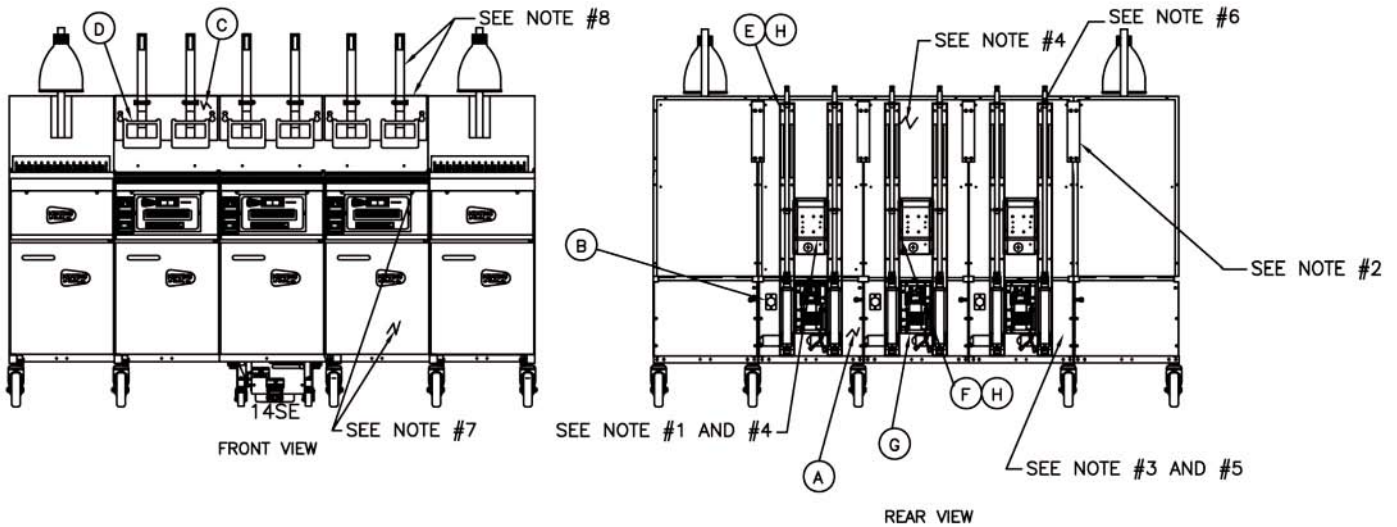




SERVICE INSTRUCTIONS

1-800-KEATING • keatingofchicago.com

BASKET-LIFT FIELD INSTALLATION INSTRUCTIONS



ASSEMBLY SEQUENCE:

1. Disconnect electrical power from outside source. Remove electrical box cover and maintain hardware, discard cover. This cover will be replaced with item #F
2. Remove connection strips in (4) locations, retain strips and hardware.
3. Remove lower rear split cover and discard (do not discard hardware). This part will be replaced with item #A.
4. Drill through rivets to remove electrical box from split top covers. Remove split top covers (retain hardware) these covers will be replaced with item #I. Install existing electrical power supply to item #I with item #J and install to fryer with retained hardware.
5. Install items #A to fryers with retained hardware. **NOTE:** Item #G and item #B was installed to item #A at the factory, for convenience.
6. Remove cover from item #E, position these assemblies as shown in rear view. Attach item #E to rear cover using item #H. Align to holes in top of split rear covers. Slide lower pin from basket-lift actuator to allow actuator to be rotated upward to allow for attachment of basket-lift housing on the bottom of item #A using item #H.
7. Remove screws to lower front control panels and open fryer door to gain access for wiring corrections and connections according to diagram (item #K). Reassemble front control panel.
8. Remove the basket hangers and replace with item #C. Install item #D on each shaft as shown in front view.
9. Reconnect electrical power from outside source fryer.
10. Test basket lift operation. Buttons 1 to 4 will control left basket-lift, 5 to 8 - right basket-lift.

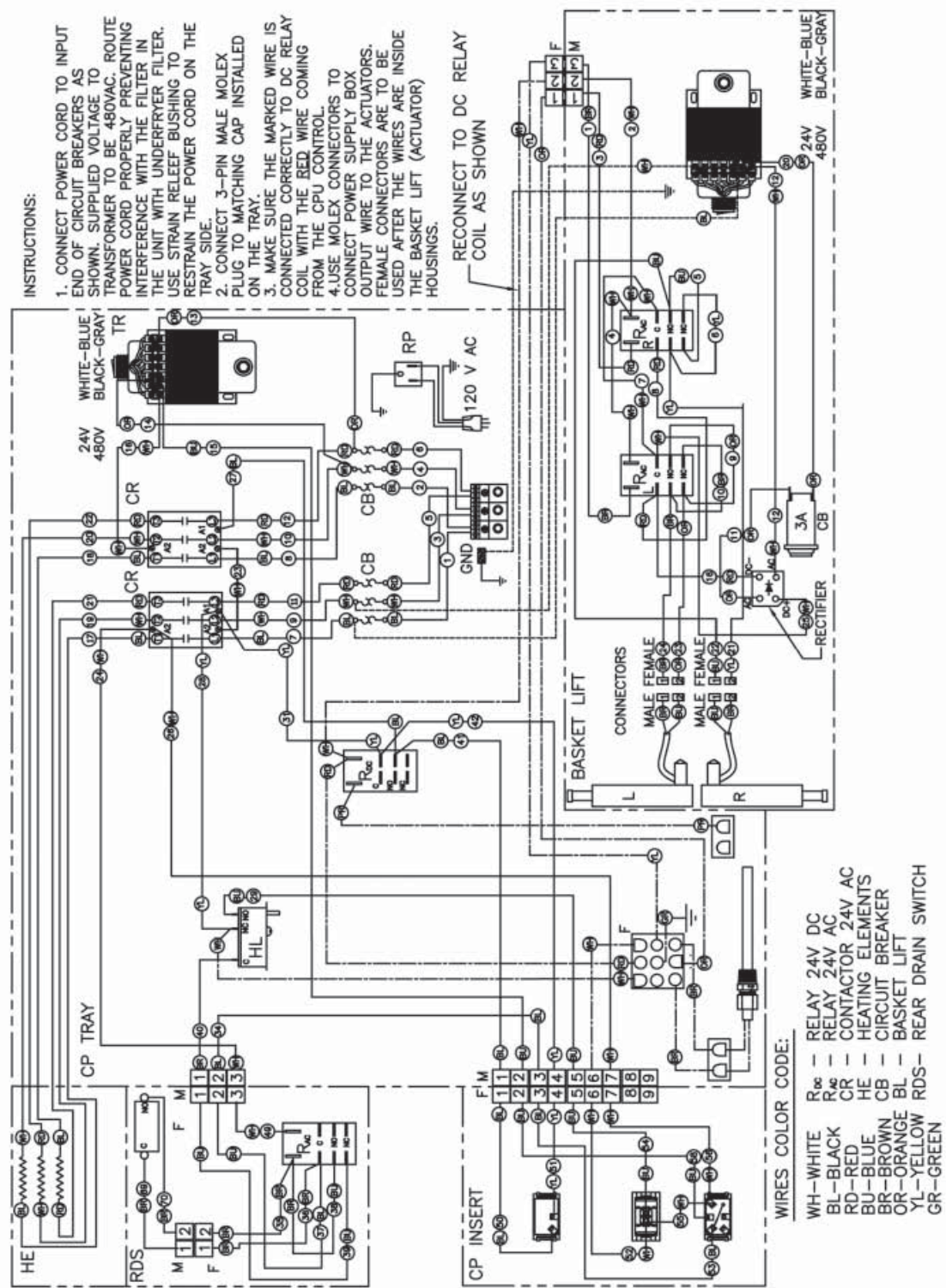
	PART NO.	QTY	DESCRIPTION
K	C0003573I	1	WIRING DIAGRAM 14 TS CPU
J	035063	18	RIVET
I	053591	3	CABINET BACK SPLIT TOP
H	011435	60	SCREW #10 X 1/2 SELF DRILL
G	055090	3	ASSY PWR SUPPLY BL CPU
F	055653	3	COVER PANEL ELECT
E	054509	6	SINGLE BASKET LIFT ASSY
D	054386	6	BASKET LIFT WELDMENT
C	054380	3	GUIDE ASSY. BASKET LIFT
B	055601	3	COVER REAR SE GAS/ELEC
A	054955	3	CABINET BACK SPLIT BOTTOM



SERVICE INSTRUCTIONS

1-800-KEATING • keatingofchicago.com

BASKET-LIFT FIELD INSTALLATION INSTRUCTIONS

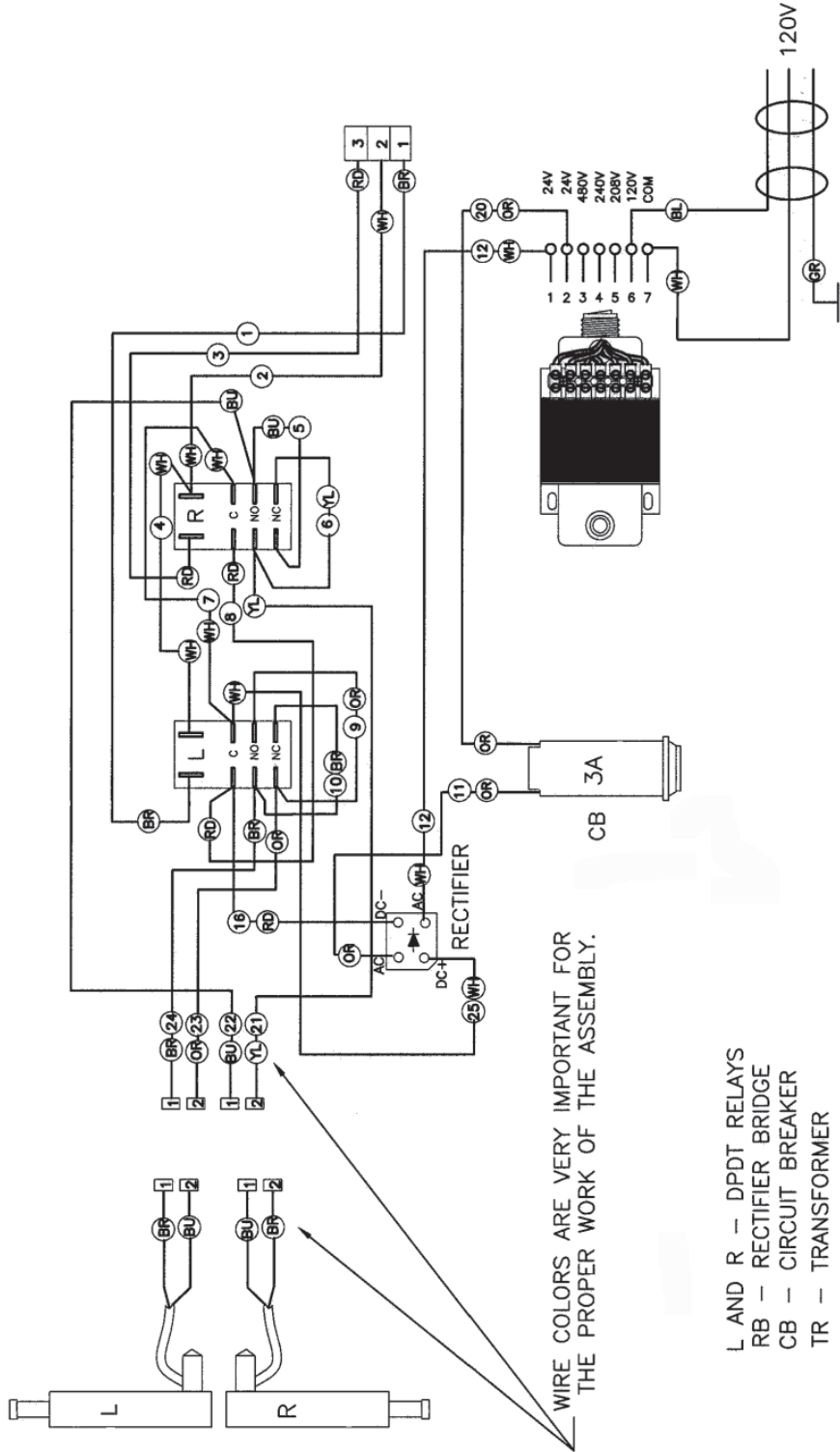




SERVICE INSTRUCTIONS

1-800-KEATING • keatingofchicago.com

BASKET-LIFT FIELD INSTALLATION INSTRUCTIONS



NOTE:

1. DIAGRAM SHOWN FOR 120V POWER SUPPLY.

- L AND R - DPDT RELAYS
- RB - RECTIFIER BRIDGE
- CB - CIRCUIT BREAKER
- TR - TRANSFORMER