



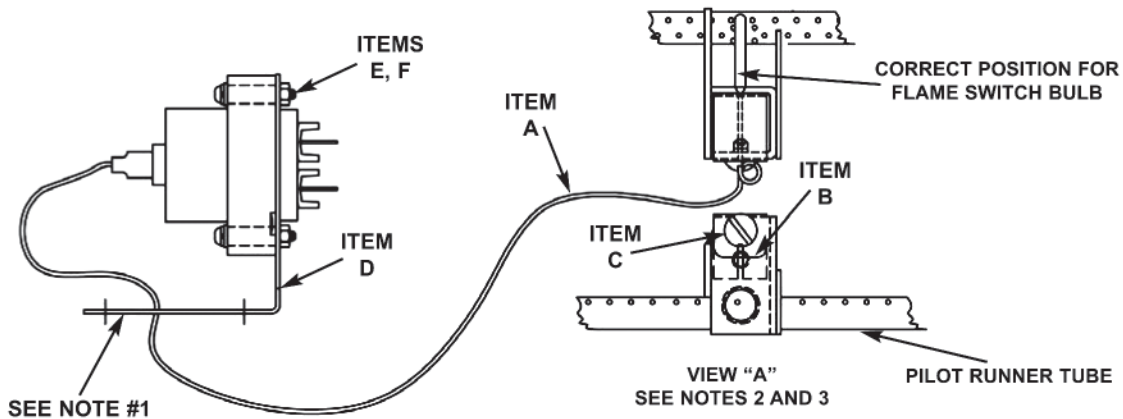
# SERVICE INSTRUCTIONS

1-800-KEATING • keatingofchicago.com

## FLAME SWITCH REPLACEMENT KIT PART# 037406

### Kit Includes:

Item	Part NO.	Quantity	Description
A	037397	1	Flame Switch
B	055599	1	Flame Switch Clip
C	017744	1	Screw 8-32 x 1/4 Pan
D	012833	1	Flame Switch Bracket
E	009081	2	Nut 4-36 Hex
F	005460	2	Screw 4-36 x 7/8 Pan



### INSTRUCTIONS:

1. Remove old flame switch and bracket located inside control panel. (Retain hardware). Assemble flame switch item A to bracket item D with items E and F. Slide bulb end of flame switch through center hold in item D flame switch bracket and through hole located in control panel. If needed, use a letter "n" drill to open hole. Reassemble to control panel with retained hardware.
2. Remove old flame switch and clip (bulb end) and replace with new flame switch item A (as shown in view "A".)
3. Insert flame switch clip item B as shown in view "A." Secure with screw item C.